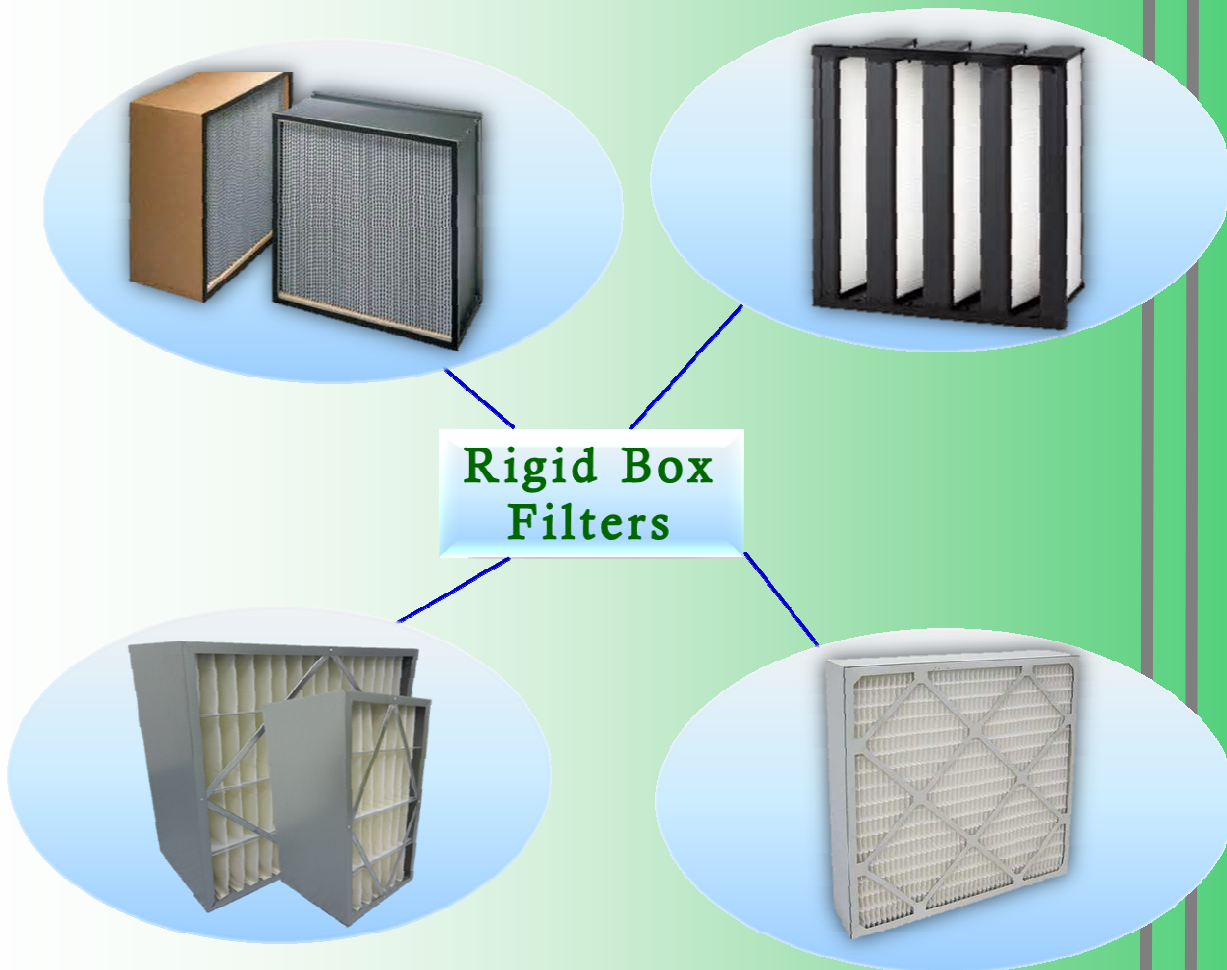


RIGID BOX FILTER:

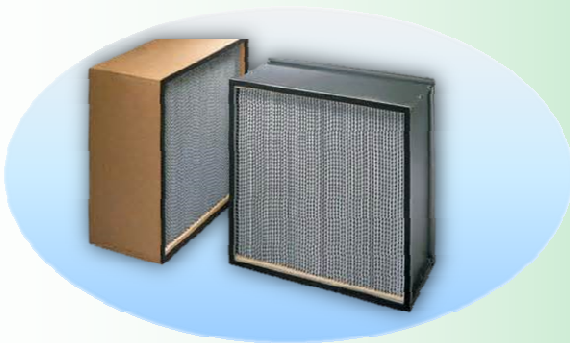
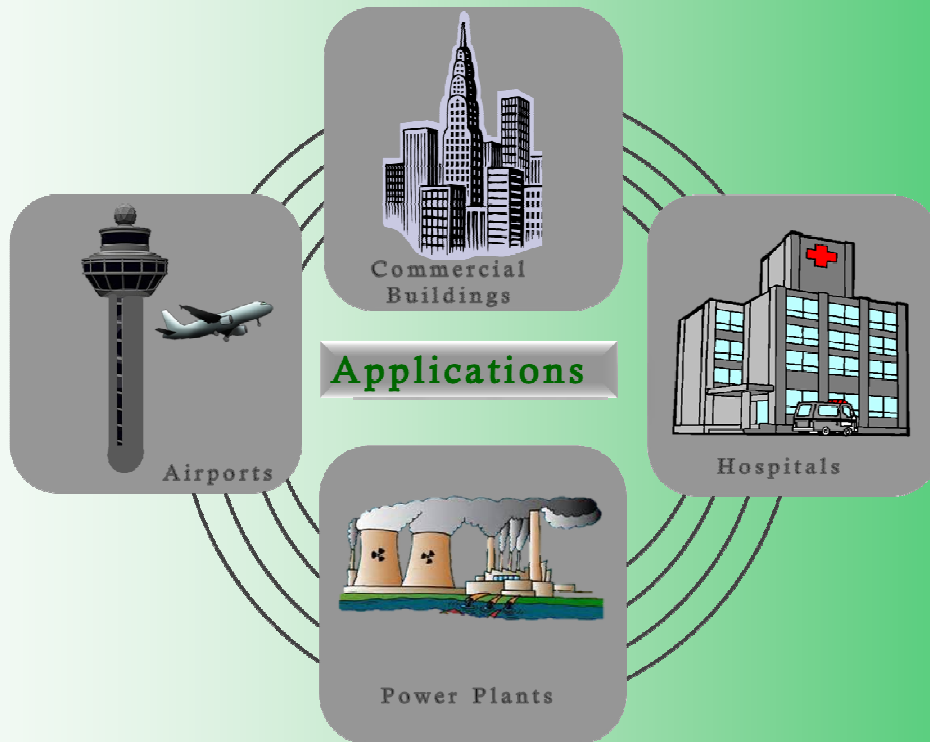
Euro-Rigid Box (EARB)

General

Euro-Rigid Box is a widely used type of filters, serving as the secondary stage of filter. Almost a must-have, Euro-Rigid Box comes in different design, catering to different applications such as Commercial Buildings, Hospitals, Microelectronic Industries, Pharmaceutical Industries, Airports, Museums, Power Plants and Laboratories. It can be found almost everywhere!!



Rigid Box Filter



EARB-SP is designed with neatly pleated glass-fibre media with a layer of u-shaped aluminium foil between it. Being the 2nd generation of secondary filter, EARB-SP is now commonly used in various industries. Built in both wooden and metal frame, it caters to sensitive applications such as high air volume, harsh and corrosive environment as well as heavy duty applications. Gas Turbine (GT) version is available in metal casing with additional layer of faceguard, usually used in harsh condition environment such as power plants.

EARB-SP Standard Construction:

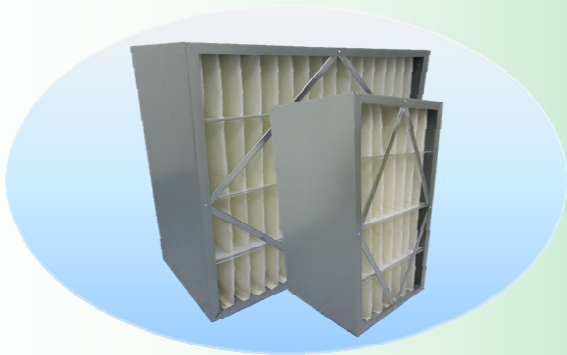
- Casing: Wooden Particle Board/ GI/Aluminium/ Stainless Steel
- Media: Glass-Fibre Media with Aluminium Foil Separators



EARB-V is designed using the latest State-of-Art technology. Built in a V-shaped construction, it allows EARB-V to increase media area for maximum usage, while sustaining a low initial pressure drop. The unique plastic frame makes the filter light in weight, easy handling during installation.

EARB-V Standard Construction:

- Casing: HIPS Plastic
- Media: Minipleated Glass-Fibre



EARB-DP is the 1st generation of Rigid Box filter created, and the only rigid box type that uses Synthetic media. Using a similar concept as pleat filters, the media is designed in deep pleat with a metal casing, to increase its rigidity. EARB-DP is the best economical choice among rigid box filters, commonly used for Commercial Building applications.

EARB-DP Standard Construction:

- Casing: GI/ Aluminium
- Media: Synthetic/ Glass-Fibre



EARB-MC is a similar design to EARB-V. Using the same concept of media pleating (minipleat), this is a compact version with thickness of only 95mm. EARB-MC is commonly used in applications whereby space constraint is a concern and also, typically for Commercial Building applications.

EAPA-MP Standard Construction

- Casing: Beverage Board/ GI/ Aluminium
- Media: Glass-Fibre



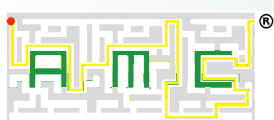
CONSTRUCTION CODE

<i>Range</i>	<i>Series</i>	<i>Size</i>	<i>Media</i>	<i>Frame / Header</i>	<i>Gasket / Faceguard</i>
EARB	SP	4412	FF8	GS	AA
↓	↓	↓	↓	↓	↓
EARB= Rigid Box	SP= Separator V= V-Bank DP= Deep Pleat MC= Minipleat Compact MC150= MC 6" MC300= MC 12"	4412 = 24x24x12" 2412 = 12x24x12" 4812 = 24x48x12" 4406 = 24x24x6" 2406 = 12x24x6"	F= Glass-fibre S= Synthetic M6/F7/F8/F9= Efficiency	A= Aluminium G= Galvanised P= Paper Board S= Stainless Steel W= Particle Board O= Others D= Double N= None S= Single	A= None B= AES C= ALS D= Both Sides A= None B= AES C= ALS D= Both Sides

Notes:

- ≈ Size refers to orientation of Width x Height x Depth.
- ≈ Size is based on Nominal Size. For exact size, refer to Technical Data Sheet.
- ≈ Gasket Location: **AES** refers to Air Entry Side. **ALS** refers to Air Leaving Side.
- ≈ Odd sizes are available upon request. Contact distributor for more information.

Solely Distributed By -



Airmaze Corporation Pte Ltd

Version RB-03