

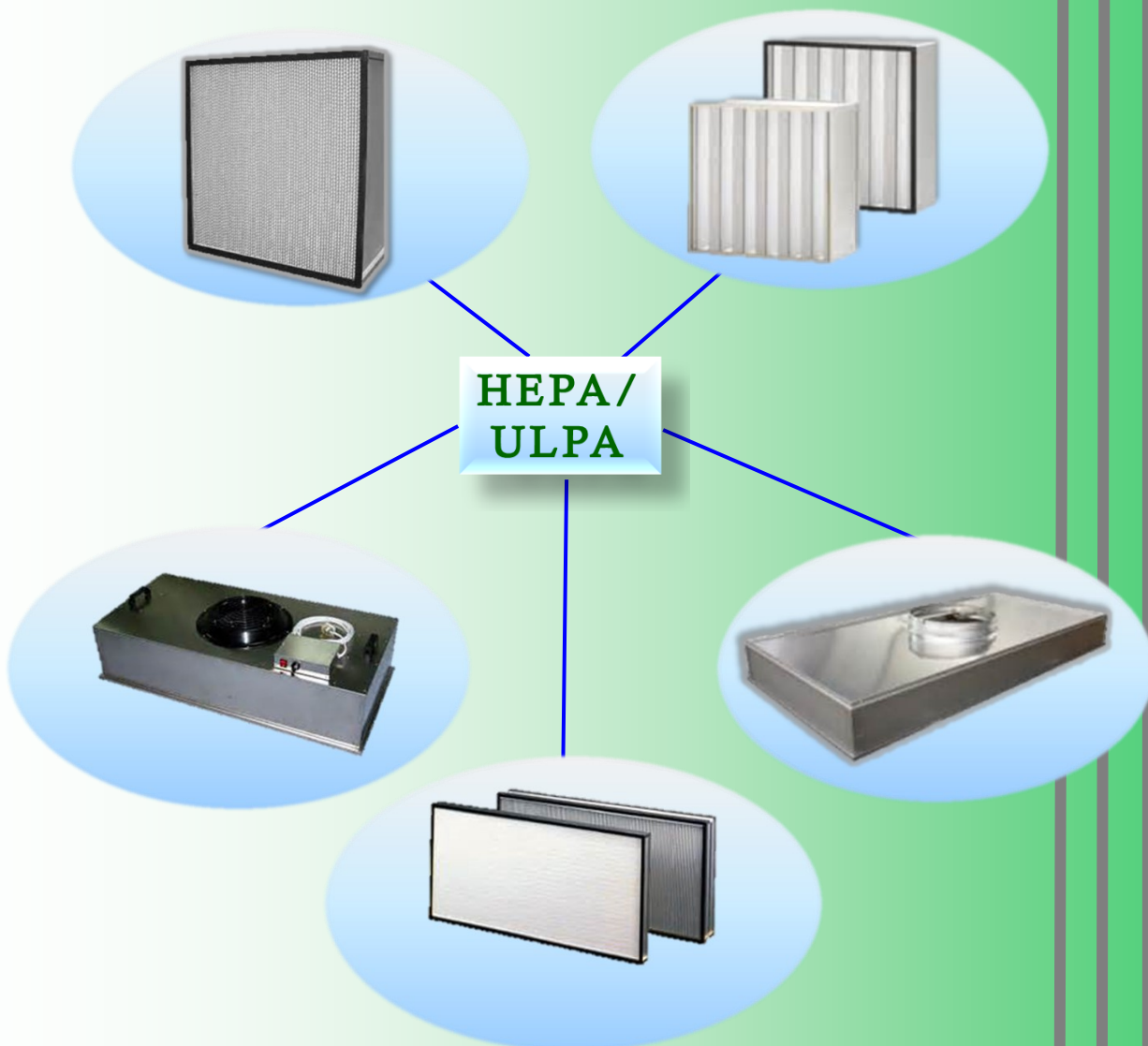
## HEPA/ULPA FILTER:

### Euro-PA(EAPA) / Euro-UPA

#### General

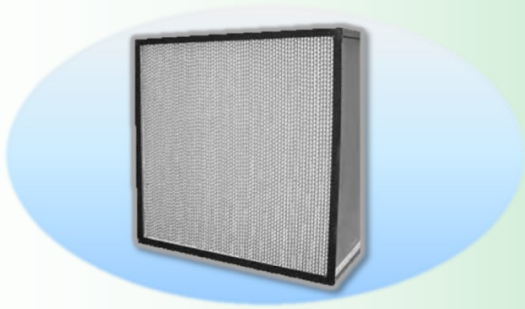
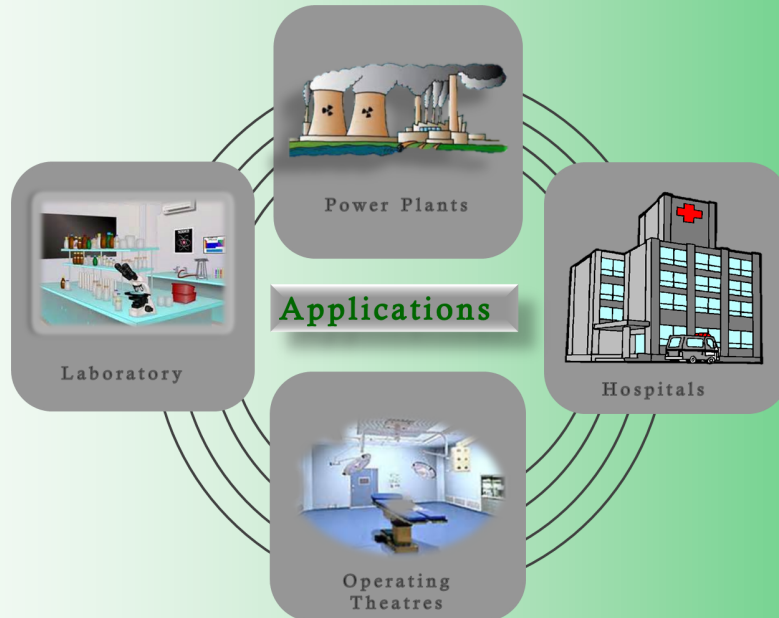
Euro-Aire's Euro-Pa HEPA / Euro-UPA ULPA range is the most delicate range of all filters, serving as the final stage of basic filtration. Not only can it readily filter off particles as small as 0.3micron and 0.12 micron respectively, it can also remove smoke and haze particles from the airstream effectively.

With careful selection of all quality materials and components used, dedicated workmanship and robust quality control and managements, all these ensure the HEPAs / ULPAs made will meet the highest industrial testing standards and expectations from the satisfied customers around the world.



## HEPA: High Efficiency Particulate Air

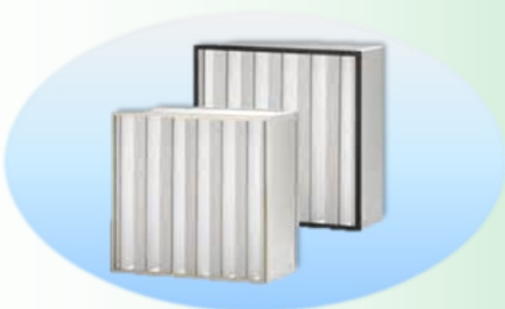
## ULPA: Ultra Low Penetration Air



**EAPA-SP** is a conventional separator-type HEPA, very commonly used in High Static Air Handling Units (AHUs). It is used widely in various applications, such as cleanrooms, hospitals, laboratories, etc.

### EAPA-SP Standard Construction

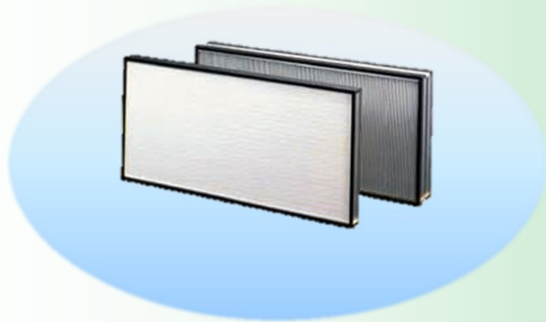
- Casing: GI/Gavalum/Particle Board/Stainless Steel
- Media: Glass-fibre with aluminium separator
- Comes in High Temperature Series with Silicone/Ceramic Gasket



**EAPA-V** is specially designed in V-bank construction to cater for high air volume and variable air volume applications, such as power plants and Air Handling Systems (AHSs). It is designed uniquely for its extraordinary large media area for long lifespan.

### EAPA-MP Standard Construction

- Casing: GI/Aluminium/Stainless Steel
- Media: Minipleat Glass-fibre in V-Bank Design



**EAPA-MP** is often used together with Fan Filter Unit (FFU), Disposable Terminal Module (DTM) or Replaceable Terminal Module (RTM). It is widely used in cleanroom applications as well as hospitals in places such as operating theatres, Intensive Care Units (ICU), isolation rooms, laboratories, etc.

#### EAPA-MP Standard Construction

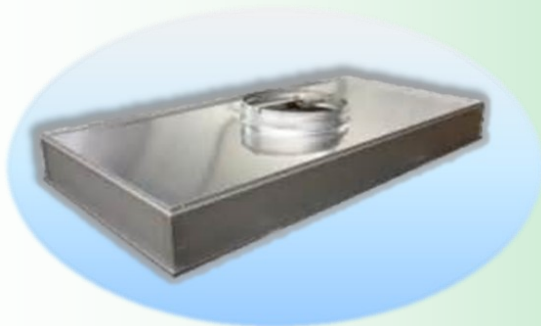
- Casing: Extruded Aluminium
- Media: Minipleated Glass-fibre



**EAPA-FFU** is commonly used in cleanroom applications, especially for Class 100 and below. It is used extensively in laminar hoods and research centres. It comes with a fan motor in the unit itself with controller, together with a minipleat HEPA at the bottom of the casing.

#### EAPA-SP Standard Construction

- Casing: Aluminium/Stainless Steel



**EAPA-TM** is vastly used in cleanrooms, laboratories and hospital applications. Differ from EAPA-FFU, EAPA-TM does not come with a fan motor in it. As such, the casing profile is much lower. Similarly, EAPA-TM comes with a minipleat HEPA at the bottom of the casing.

#### EAPA-MP Standard Construction

- Casing: Extruded Aluminium/Stainless Steel

### Construction Code

Range	Series	Size	Efficiency	Frame / Header	Gasket / Faceguard
<b>EAPA</b>	<b>SP</b>	<b>4412</b>	<b>H13</b>	<b>GS</b>	<b>AA</b>
↓	↓	↓	↓	↓	↓
<b>EAPA= Euro-Pa</b> <b>EAUPA= Euro-ULPA</b>	<b>SP=</b> EAPA-SP <b>V=</b> EAPA-V <b>MP=</b> EAPA-MP <b>FFU=</b> EAPA-FFU <b>TM=</b> EAPA-TM	<b>(W x H x D)</b> <b>4412=</b> 24x24x12" <b>2412=</b> 12x24x12" <b>8412=</b> 48x24x12" <b>4406=</b> 24x24x6" <b>2406=</b> 12x24x6"	<b>H13=</b> 99.99%* <b>H14=</b> 99.999%* <b>U15=</b> 99.9995%** <b>U16=</b> 99.99995%** <b>U17=</b> 99.999995%** <small>*@0.3micron</small> <small>**@0.12micron</small>	<b>A=</b> Aluminium <b>G=</b> Galvanised <b>P=</b> Plastic <b>S=</b> Stainless Steel <b>W=</b> Particle Board <b>O=</b> Others <b>N=</b> None <b>S=</b> Single <b>D=</b> Double	<b>A=</b> None <b>B=</b> AES <b>C=</b> ALS <b>D=</b> Both Sides <b>A=</b> None <b>B=</b> AES <b>C=</b> ALS <b>D=</b> Both Sides

### Notes:

- ≈ Size is based on either nominal or exact dimensions.
- ≈ Gasket / Faceguard Location: **AES** refers to Air Entry Side. **ALS** refers to Air Leaving Side.
- ≈ Odd sizes are available upon request. Contact distributor for more information.
- ≈ For Hi-Temp Series, add on '-HT' at the end of the model.

Solely Distributed By -


[www.airmazecorp.com](http://www.airmazecorp.com)

Version PA-04